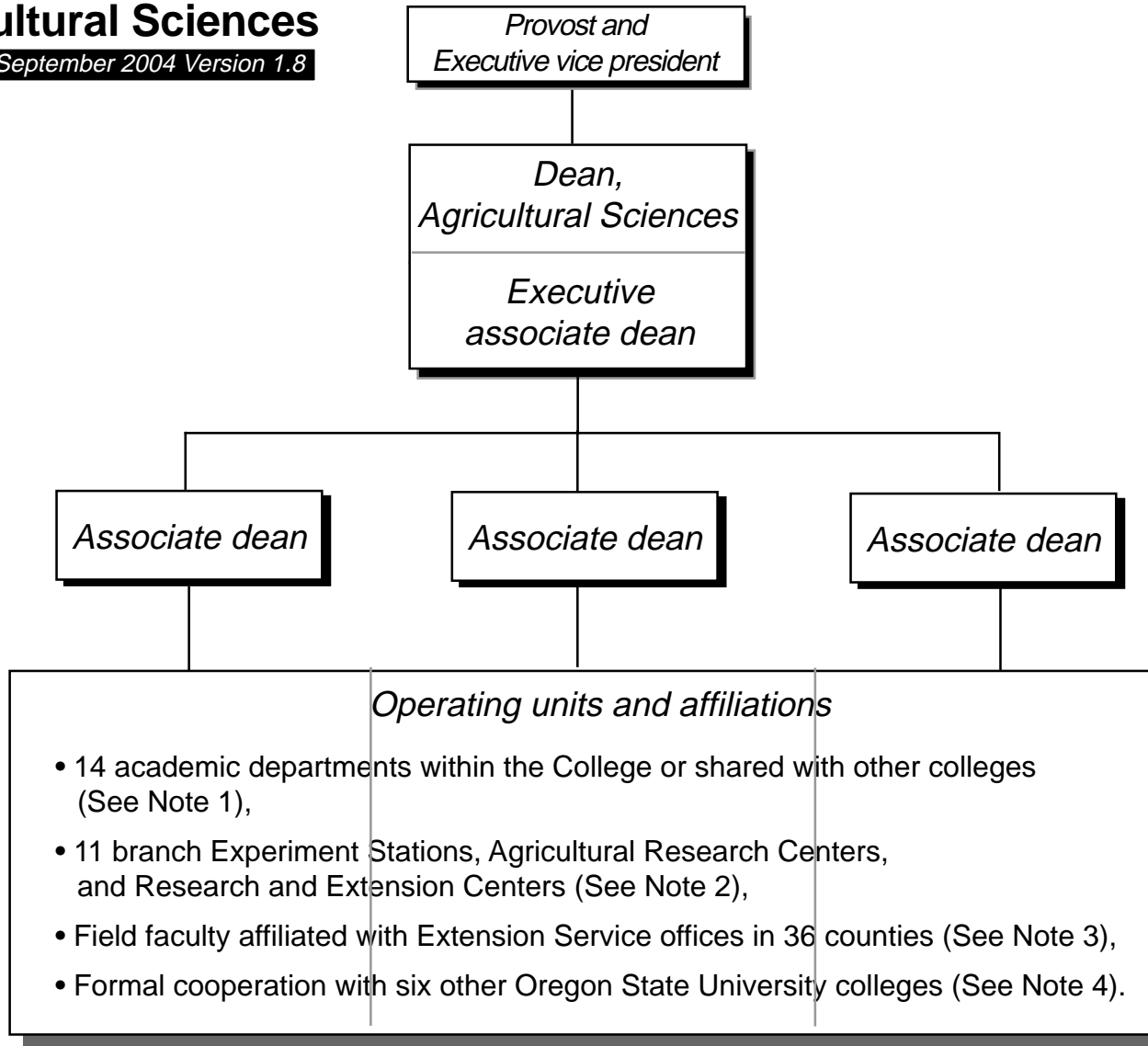


# Oregon State University College of Agricultural Sciences

September 2004 Version 1.8



NOTE: Dean is also director, Oregon Agricultural Experiment Station (OAES); associate deans are associate directors of OAES.

PLEASE SEE OTHER SIDE FOR DETAILS



Source: Office of the Dean

# Dean and associate dean responsibilities

## *College of Agricultural Sciences at Oregon State University*

*Effective February 2005*

### Thayne Dutson

*Dean of the College, and Director,  
Agricultural Experiment Station*

#### Responsibilities

CEO, College administration and management  
Overall strategic leadership  
Fiscal and program direction  
Represent the College and the Experiment Station in University policy bodies  
Inter-college collaboration  
Constituency relations  
Legislative relations  
Development and "friend building"

#### Liaison

OSU Alumni Association  
OSU Foundation  
NABC  
Natural Resources Institute  
Oregon Board of Agriculture and Oregon Dept. of Agriculture  
Academic deans  
President's Cabinet  
NASULGC: Admin Heads Section  
State and federal agencies  
Elected officials  
Commodity organizations  
Consumer groups  
Environmental organizations  
Advisory bodies  
News media

Saved as:  
D&AD assignments 020405 V2.xls  
on AGDEAN : DEANS' ASSIGNMENTS

### Roy G. Arnold

*Executive Associate Dean*

#### Responsibilities

COO, College administration and management  
Administrative direction and policy  
Student Advancement Office  
Budget  
Staffing  
Facilities  
Space  
Equipment

#### Department

Rangeland Resources †

#### Liaison

E.R. Jackman Board  
Ag Research Foundation  
Marine Sci Cntr Adv Comm  
Rural Studies Program  
CWEST Administrative Adv Board  
Community Seafood Initiative  
Recruitment & Retention Comm  
Fish Disease Lab Advisory Comm  
Marine-Freshwater Biomed Cntr

*\*With Dean Thayne Dutson.*

*\*\*Shared with Jan Auyong*

*† Interim departmental liaison*

### Charles Boyer

*Associate Dean*

#### Departments and units

Ag Ed and General Ag  
Crop and Soil Science  
Greenhouse  
Horticulture  
External Relations and Marketing

#### Branch experiment stations

CBARC, Pendleton-Moro  
KES, Klamath Falls  
MCAREC, Hood River  
NWREC, Aurora  
SOREC, Medford

#### Degree programs

EOU, LaGrande  
Graduate programs:  
Genetics  
Master of Agriculture  
Interdiscip undergrad pgms:  
Bioresources Research

#### Liaison

Development planning  
E.R. Jackman Board  
Variety Release Committee  
NASULGC: ESCOP  
NABC\*  
Univ-Industry Consortium\*

#### Special grants

STEEP III liaison to WSU\*\*  
NW Cntr for Small Fruits Research\*\*  
Grass Seed CSSA\*\*

**Shared responsibilities:** Dean and associate deans work collaboratively as a team. Strategic issues, promotion and tenure, budget, student programs, planning, priority staffing decisions, and other matters are handled in this manner. Associate deans are also associate directors of the Oregon Agricultural Experiment Station.

### Stella Coakley

*Associate Dean*

#### Departments and units

Botany and PP  
Chemistry  
Microbiology  
Statistics

#### Branch experiment stations

COARC, Madras-Powell Butte  
HAREC, Hermiston

#### Degree programs

Graduate programs  
Entomology  
Molec and Cellular Biology\*  
  
Sloan Professional MS degrees

#### Liaison

Linus Pauling Institute  
Integ. Plant Protection Cntr  
Survey Research Center  
Center for Gene Research\*  
OSU Natural History Museum

### Erik Fritzell

*Associate Dean*

#### Departments and units

Ag and Resource Economics  
Animal Sciences  
Bioengineering  
Environ and Molec Toxicology  
Ext and Exp Stn Comm  
Fisheries and Wildlife  
Food Science and Tech

#### Branch experiment stations

COMES, Newport  
EOARC, Burns-Union  
Food Innov Cntr ES, Portland  
MES, Ontario

#### Degree programs

Interdiscip undergrad pgms:  
Environmental Sciences  
Natural Resources  
Interdisciplinary grad programs:  
Graduate Faculty of Econ  
Marine Resource Mgt  
Environmental Sciences

#### Liaison

Diversity and inclusiveness  
Ecampus  
Veterinary Medicine  
Health and Human Sciences  
Sea Grant College Program  
NASULGC: ACOP  
Env Health Sciences Center